



Six Hills House
Kings Road | Stevenage | SG1 2TP



LAND CHARTER HOMES WELCOMES
YOU TO SIX HILLS HOUSE

A NEW DEVELOPMENT OF
LUXURY APARTMENTS IN THE
HEART OF STEVENAGE

Our Story



LAND CHARTER **HOMES**

Our award winning company has been recognised for delivering high quality projects, by being presented with awards from the Local Authority Building Control Inspectors, and the CRL Building Warranties, provider for excellence in quality of design and delivery standards.



We create bespoke homes, from one off houses in conservation areas through to large estate developments and we have recently focused on city centre redevelopment, and Six Hills House is joining our list of office to residential conversions.

Land Charter is a family run business which employs friendly and reliable staff, who care for our customers. We take pride in every project and are renowned for our high quality finish and attention to detail.

The company employs local subcontractors and tradesmen, most of who have worked with us for many years. We also use local architects

who have lived in the project's catchment area. Our employees know the demands and different styles of each town or city we work in, so they can reflect the ethos of its surrounding environment.

We make best use of local influence and materials. The resources and provisions for our projects are selected for their colours and textures, which are combined to reflect the surrounding architectural vernacular.

All Land Charter developments are individual. The look and feel of our homes evolves after careful consideration of the local environment, taking into account the region's history and architectural influences.

Internally, meticulous attention to detail, and a clean and fresh look, reflects the contemporary exterior.

We are distinguished by the precision in which the vision of each project is followed through. Land Charter is unrivaled in quality, design and attentiveness.



Gemini House Chelmsford



CANSIDE
Cater House Chelmsford
(Completed)



Rivers House Chelmsford



Description

Six Hills

Six Hills House is located in the centre of Stevenage and was constructed as an office building in 1982 over ground and seven upper floors. The town is within close proximity to both Luton and Stansted International Airports with excellent Road and Rail links to London.

The conversion will span across eight floors providing 143 apartments just 5 minutes' walk from the station and Town Centre. Six Hills is prominently located at the Junction of Six Hills Way and London Road. The Stevenage Leisure Park and the Roaring Meg Retail and Leisure Park are both in close proximity, whilst North Hertfordshire College and Campus and an Asda Superstore lie immediately opposite.

To the front of the premises The Six Hills collection of Roman barrows which are classed as a Scheduled Ancient Monument and are protected by law can be seen. They form the most complete Roman barrow group in the country. Beside their historical significance, they lend their name to an important thoroughfare in the town (Six Hills Way) and our development and are a local landmark.



Six Hills House





Due to the nature of conversion works, layouts, sizes, and specification may change. Purchasers please check all details on site before completion.



Location

Perfectly Connected

Six Hills House is perfectly connected to Stevenage Town and beyond. Commuting could not be easier with Stevenage train station a 5-minute walk away.

Stevenage offers an alternative to London living and you can still be at Kings Cross Station, a major London railway terminus as quickly as 22 minutes, Luton airport is just a 30 minute journey whilst Stansted and Southend international airport are also at your fingertips, taking just 45 minutes, meaning a weekend break abroad is a simple journey away.

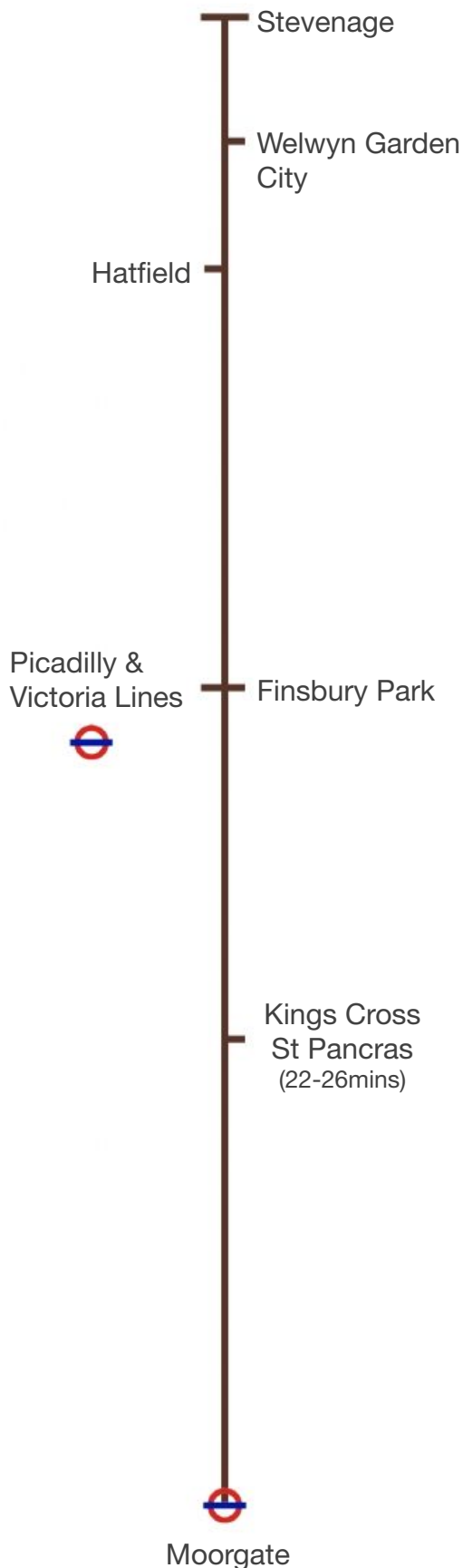
Both Gatwick and Heathrow airports are an hour drive away, so via the nearby A roads and M25 means those longer haul flights are easy to get to.

By road the nearby A1 offers a direct and easy route to the M25 which has connections with the M1 and A12. The A505 is also close by, connecting with the M11.

What's more, this development is within close proximity to two Secondary Schools The Thomas Alleyne's School and Marriots School and a number of Primary and nursery Schools offering a great choice. Six Hills House is also perfect for students with the North Hertfordshire College just 15 minutes' walk away.

For all your leisure facilities, whether it is swimming, health & fitness, theatre, dance & exercise, spa, sailing and outdoor activities there are a number of facilities within 15 minutes' walk from Six Hills House. There are also two 18 hole golf courses within a 10 minute drive.

Stevenage town also offers over 45 km of well used cycle ways making it one of the best towns in the UK for travelling by bicycle. The woodland Trust rank Stevenage as one of the best places in the UK for ease of access to large woodland, only slightly behind the Forest of Dean and The New Forest.

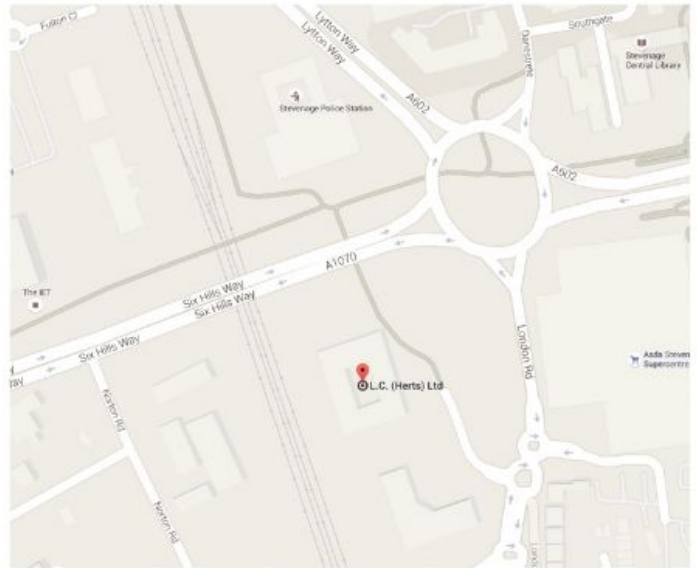


Stevenage

A vibrant location, good travel and transport links are just some of the elements that make Stevenage a great place to live. Stevenage was designed with leisure in mind with many excellent facilities for local people to enjoy, including a leisure park with cinema, bowling and places to eat, lush open green spaces and well used extensive cycle and foot paths.

Stevenage Town Centre

Stevenage was Britain's first new town and built to an inspirational design, including the first pedestrianised shopping centre in Britain. Shopping opportunities are many and varied too with a pedestrianised town centre, small individual shops in the Old Town and large retail parks on the outskirts. In recent years it has attracted quality new investment in retail and leisure such as the West Gate Centre, the Forum and the Plaza as well as out of town retail centres. Located in Stevenage Town Centre, is Stevenage indoor market. The Market provides a warm and friendly atmosphere with over 130 stalls offering a wide and varied range of goods and services. It has been trading for over 30 years and offers a lively, alternative and traditional place to shop.



Stevenage Old Town

Stevenage Old Town was the original Stevenage. The Old Town still has a village feel with historic buildings, coaching inns and pubs. The area becomes lively in the evenings and weekends and as well as pubs there is also a selection of restaurants.

The 800-year-old market creates a buzzing community spirit, while the Friday and Saturday market specialises in delicious local produce.

RIVER ISLAND

Miss Selfridge

H&M

BHS
BRITISH HOME STORES

TONI & GUY

flava
bar

ASDA

DOROTHY PERKINS

Stevenage
IndoorMarket

Specification

Inside your Apartment

- Ground Floor and “Roof Top” apartments will have Aluminium clad front doors. The front door to the “internal” apartment is oak veneered, with an art-deco panel styling – fitted with multi-point locking system and spyhole viewer.
- Internal doors are of a matching pattern but painted to reflect all the light from the windows – it’s all in the detail.
- The apartment is already set up for satellite and digital TV services, including provision for Sky+ and Sky HD connection (not multi-room) (subject to subscription fees payable to Sky by you).
- Your kitchen is fitted with a selection of complementary and contrasting doors, worktops and wall units. The worktops are LED lit and the kitchen is kitted out with wash-dryer, dishwasher, oven, hob, extractor hood, fridge and freezer.
- Bathrooms are fitted with modern white suites and double-ended baths. The mirror is backlit with LED’s and there’s no need to worry about shaving point, because we’ve put one in for you. Bath and shower rooms are half tiled.
- Your main bedroom is fitted with a wardrobe for optimum storage space (not applicable for studios).
- An intercom / video entry system allows you to find out who is at the door before you open it.
- New double-glazed windows will be fitted throughout. They will keep your flat both warm and light.
- Timber veneered flooring to bedrooms, living room, kitchen and hall with ceramic tiles in the bathroom and en-suite (where applicable) – easy to wipe, easy to clean.
- Just so you know, it’s electric heating and hot water.
- And the smoke detectors are mains operated.



Inside your Building:

Because we know first impressions matter, you have a light and spacious reception lobby, on the ground floor, giving you both stair and lift (Excludes 8th floor) access to the upper floors. Access for visitors by intercom/video link to your apartment.

Further intercom-controlled secure access is gained from the car park.

All two and three bedroom apartments have parking. Some one bedroom apartments have parking. Please ask agents for further details.



Purchasers please note:

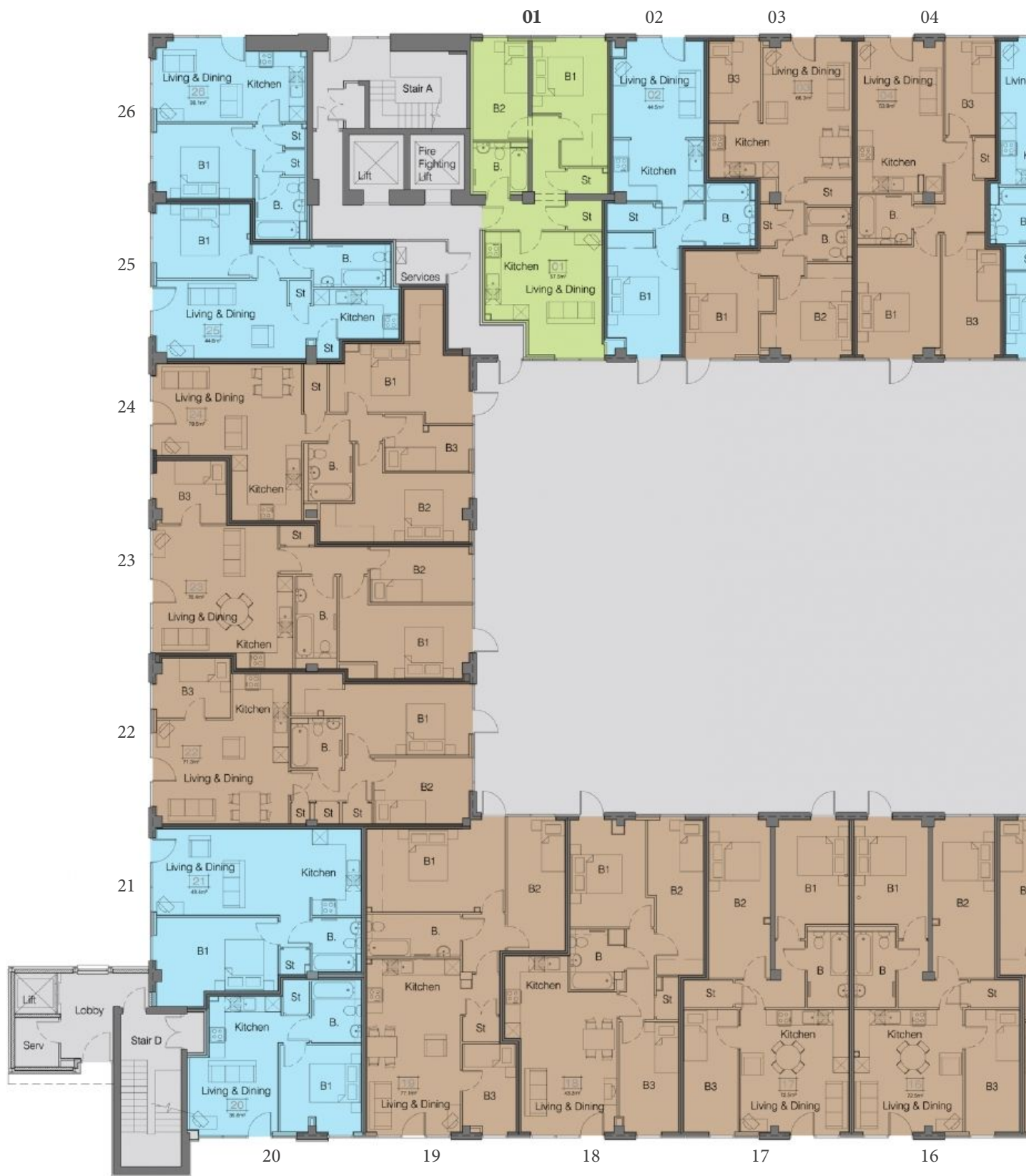
This specification is provided as a general guide of the company's intentions and is subject to availability of materials and subject to contract. It is not intended to form part of a contract. As the development will be carried out over a number of months some of our plans may be amended or revised. Clients should therefore not rely upon this document as a statement of fact. Prospective purchasers should check all details with the company.

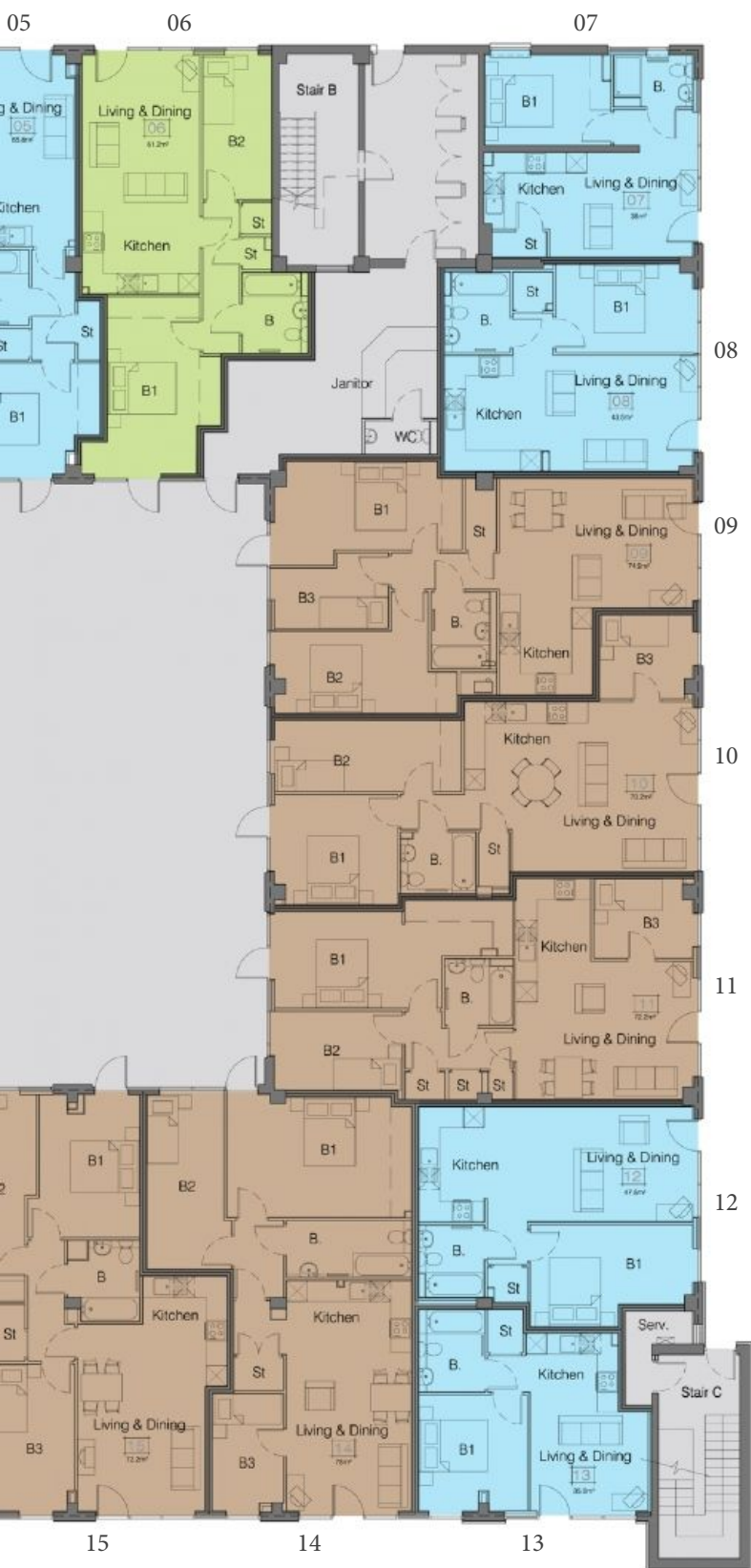
For your ultimate peace of mind an independent 10 year building warranty will be provided by C-R-L.



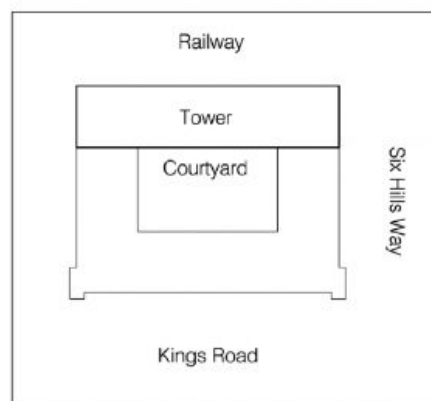
**First impressions matter which is why we pride ourselves
in the highest quality specifications.**

Floor Plan





- 1 Bed
- 2 Bed
- 3 Bed
- Common/ Shared Areas



Due to the nature of conversion works, layouts, sizes, and specification may change. Purchasers please check all details on site before completion.

Ground Floor

Schedule of Accommodation

Ground Floor

Apartment 1 – 2 Bedroom

Area:	57.5 sq. M	618 sq. ft
Living space:	4.78m x 2.84m Max	15'6" x 9'3"
Kitchen:	3.43m x 1.7m Max	11'2" x 5'5"
Bedroom 1:	4.03m x 2.96m Max	13'2" x 9'7"
Bedroom 2:	3.84m x 2.14m Max	12'5" x 7'
Bathroom:	2.14m x 1.92m Max	7' x 6'2"

Apartment 2 – 1 Bedroom

Area:	44.5 sq. M	478 sq. ft
Living space:	3.75m x 3.54 Max	12'3" x 11'6"
Kitchen:	3.51m x 2.4m Max	11'5" x 7'8"
Bedroom 1:	4.76m x 2.81m Max	15'6" x 9'2"
Bathroom:	2.46m x 1.94 Max	8' x 6'3"

Apartment 3 – 3 Bedroom

Area:	66.3 sq. M	713 sq. ft
Living space:	5.33m x 3.6m Max	17'4" x 11'8"
Kitchen:	2.7m x 2.1m Max	8'8" x 6'8"
Bedroom 1:	4.02m x 2.85 Max	13'1" x 9'3"
Bedroom 2:	3.14m x 2.99m Max	10'3" x 9'8"
Bedroom 3:	3.1m x 2.02m Max	10'1" x 6'6"
Bathroom:	2.13m x 1.8m Max	6'9" x 5'9"

Apartment 4 – 3 Bedroom

Area:	53.9 sq. M	580 sq. ft
Living space:	3.85m x 3.34m Max	12'6" x 10'9"
Kitchen:	3.34m x 2.02m Max	10'9" x 6'6"
Bedroom 1:	4.2m x 3.22m Max	13'7" x 10'5"
Bedroom 2:	3.82m x 1.94m Max	12'5" x 6'3"
Bedroom 3:	4.09m x 2.27m Max	13'4" x 7'4"
Bathroom:	2.1m x 1.97m Max	6'8" x 6'4"

Apartment 5 – 1 Bedroom

Area:	65.8 sq. M	708 sq. ft
Living space:	3.23m x 2.84m Max	10'5" x 9'3"
Kitchen:	3.31m x 2.8m Max	10'8" x 9'1"
Bedroom 1:	3.84m x 3.23m Max	12'5" x 10'5"
Bathroom:	2.35m x 2.23m Max	7'7" x 7'3"

Apartment 6 – 2 Bedroom

Area:	61.2 sq. M	658 sq. ft
Living space:	4.54m x 3.43m Max	14'8" x 11'2"
Kitchen:	3.44m x 2.27m Max	11'2" x 7'4"
Bedroom 1:	3.76m x 2.79 Max	12'3" x 9'1"
Bedroom 2:	4.2m x 2.02m Max	13'7" x 6'6"
Bathroom:	2.39m x 1.9m Max	7'8" x 6'2"

Due to the nature of conversion works, layouts, sizes, and specification may change. Purchasers please check all details on site before completion.

Apartment 7 – 1 Bedroom

Area:	36 sq. M	387 sq. ft
Living space:	3.25m x 3.07m Max	10'6" x 10'
Kitchen:	3m x 2.24m Max	9'8" x 7'3"
Bedroom 1:	3.69m x 2.62m Max	12'1" x 8'5"
Bathroom:	2.31m x 1.5m Max	7'5" x 4'9"

Apartment 8 – 1 Bedroom

Area:	43.5 sq. M	468 sq. ft
Living space:	3.37m x 4.41m Max	11' x 14'4"
Kitchen:	3.37m x 2.82m Max	11' x 9'2"
Bedroom 1:	4.2m x 2.59m Max	13'7" x 8'4"
Bathroom:	2.35m x 1.92m Max	7'7" x 6'2"

Apartment 9 – 3 Bedroom

Area:	74.9 sq. M	806 sq. ft
Living space:	5.65m x 3.76m Max	18'5" x 12'3"
Kitchen:	2.54m x 2.72m Max	8'3" x 8'9"
Bedroom 1:	4.8m x 2.58m Max	15'7" x 8'4"
Bedroom 2:	4.46m x 2.4m Max	14'6" x 7'8"
Bedroom 3:	3.31m x 1.76m Max	10'8" x 5'7"
Bathroom:	2.26m x 1.93m Max	7'4" x 6'3"

Apartment 10 – 2 Bedroom

Area:	70.2 sq. M	755 sq. ft
Living space:	4.95m x 4.2m Max	16'2" x 13'7"
Kitchen:	3.6m x 2.55m Max	11'8" x 8'3"
Bedroom 1:	3.2m x 3.57m Max	10'4" x 11'7"
Bedroom 2:	5.42m x 2.6m Max	17'7" x 8'5"
Bathroom:	1.77m x 2.14m Max	5'8" x 7'

Apartment 11 – 3 Bedroom

Area:	72.2 sq. M	777 sq. ft
Living space:	4.02m x 5.30m Max	13' 1" x 17'3"
Kitchen:	2.18m x 2.8m Max	7'1" x 9'1"
Bedroom 1:	2.8m x 4.85m Max	9'1" x 15'9"
Bedroom 2:	3.65m x 2.3m Max	11'9" x 7'5"
Bedroom 3:	2.9m x 2.3m Max	9'5" x 7'5"
Bathroom:	2.02m x 1.94m Max	6'6" x 6'3"

Apartment 12 – 1 Bedroom

Area:	47.5 sq. M	511 sq. ft
Living space:	3.34m x 4.84m Max	10'9" x 15'8"
Kitchen:	3.35m x 2m Max	10'9" x 6'5"
Bedroom 1:	4.75m x 2.95m Max	15'5" x 9'6"
Bathroom:	2.08m x 1.85m Max	6'8" x 6'

Apartment 13 – 1 Bedroom

Area:	35 sq. M	376 sq. ft
Living space:	3.02m x 3.43m Max	9'9" x 11'2"
Kitchen:	2.68m x 2.3m Max	8'7" x 7'5"
Bedroom 1:	3.37m x 3.16m Max	11' x 10'3"
Bathroom:	2.4m x 1.93m Max	7'8" x 6'3"

Ground Floor

Apartment 14 – 3 Bedroom

Area:	78 sq. M	839 sq. ft
Living space:	3.63m x 4.55m Max	11'9" x 14'9"
Kitchen:	3.66m x 2.1m Max	12' x 6'8"
Bedroom 1:	5.42m x 3.5m Max	17'7" x 11'4"
Bedroom 2:	5.22m x 2.26m Max	17'1" x 7'4"
Bedroom 3:	3.38m x 2.09 Max	11' x 6'8"
Bathroom:	3.63m x 1.65m Max	11'9" x 5'4"

Apartment 15 – 3 Bedroom

Area:	72.2 sq. M	777 sq. ft
Living space:	4.4m x 3.73m Max	14'4" x 12'2"
Kitchen:	2.48m x 2.46m Max	8'1" x 8'
Bedroom 1:	4.15m x 2.87m Max	13'6" x 9'4"
Bedroom 2:	6.04m x 2.01m Max	19'8" x 6'5"
Bedroom 3:	4.28m x 2.28m Max	14' x 7'4"
Bathroom:	2.3m x 2m Max	7'5" x 6'5"

Apartment 16 – 3 Bedroom

Area:	72.5 sq. M	780 sq. ft
Living space:	4.24m x 2.31m Max	13'9" x 7'5"
Kitchen:	3.2m x 2.45m Max	10'4" x 8'
Bedroom 1:	4.28m x 2.88m Max	14' x 9'4"
Bedroom 2:	6.29m x 2.41m Max	20'6" x 7'9"
Bedroom 3:	4.9m x 2.1m Max	16' x 6'8"
Bathroom:	2.3m x 2.1m Max	7'5" x 6'8"

Apartment 17 – 3 Bedroom

Area:	72.5 sq. M	780 sq. ft
Living space:	4.24m x 2.31m Max	13'9" x 7'5"
Kitchen:	3.2m x 2.45m Max	10'4" x 8'
Bedroom 1:	4.28m x 2.88m Max	14' x 9'4"
Bedroom 2:	6.29m x 2.41m Max	20'6" x 7'9"
Bedroom 3:	4.9m x 2.1m Max	16' x 6'8"
Bathroom:	2.3m x 2.1m Max	7'5" x 6'8"

Apartment 18 – 3 Bedroom

Area:	72.2 sq. M	777 sq. ft
Living space:	3.78m x 3.75m Max	12'4" x 12'3"
Kitchen:	2.46m x 2.48m Max	8' x 8'1"
Bedroom 1:	4.05m x 2.98m Max	13'2" x 9'7"
Bedroom 2:	6.01m x 2m Max	19'7" x 6'5"
Bedroom 3:	4.28m x 2.28m Max	14' x 7'4"
Bathroom:	2.35m x 2.11m Max	7'7" x 6'9"

Apartment 19 – 3 Bedroom

Area:	77.1 sq. M	829 sq. ft
Living space:	4.72m x 3.66m Max	15'4" x 12'
Kitchen:	3.63m x 2.1m Max	11'9" x 6'8"
Bedroom 1:	5.38m x 3.22m Max	17'6" x 10'5"
Bedroom 2:	5.22m x 2.23m Max	17'1" x 7'3"
Bedroom 3:	3.57m x 2.06m Max	11'7" x 6'7"
Bathroom:	3.63m x 1.65m Max	11'9" x 5'4"

Due to the nature of conversion works, layouts, sizes, and specification may change. Purchasers please check all details on site before completion.

Apartment 20 – 1 Bedroom

Area:	35.6 sq. M	383 sq. ft
Living space:	3.45m x 3.02m Max	11'9" x 9'9"
Kitchen:	2.78m x 2.4m Max	9'1" x 7'8"
Bedroom 1:	3.38m x 3.15m Max	11' x 10'3"
Bathroom:	2.44m x 1.93m Max	8' x 6'3"

Apartment 21 – 1 Bedroom

Area:	49.4 sq. M	531 sq. ft
Living space:	4.81m x 3.34m Max	15'7" x 10'9"
Kitchen:	3.35m x 1.95m Max	10'9" x 6'3"
Bedroom 1:	2.85m x 4.73m Max	15'5" x 9'3"
Bathroom:	2.08m x 1.9m Max	6'8" x 6'2"

Apartment 22 – 3 Bedroom

Area:	71.3 sq. M	767 sq. ft
Living space:	4.02m x 5.29m Max	13'1" x 17' 3"
Kitchen:	3.44m x 2.17m Max	11'2" x 7'1"
Bedroom 1:	2.77m x 4.97m Max	16'3" x 9'
Bedroom 2:	2.57m x 3.82m Max	12' 5" x 8'4"
Bedroom 3:	2.88m x 2.3m Max	9'4" x 7'5"
Bathroom:	1.93m x 2m Max	6'5" x 6'3"

Apartment 23 – 2 Bedroom

Area:	70.4 sq. M	757 sq. ft
Living space:	4.98m x 3.21m Max	16'3" x 10'5"
Kitchen:	3.6m x 2.2m Max	11'8" x 7'2"
Bedroom 1:	5.2m x 2.86 Max	17' x 9'3"
Bedroom 2:	4m x 2.17m Max	13' 1" x 7'1"
Bathroom:	3.16m x 1.62m Max	10'3" x 5'3"

Apartment 24 – 3 Bedroom

Area:	78.5 sq. M	844 sq. ft
Living space:	3.61m x 5.79m Max	18'9" x 11'8"
Kitchen:	2.79m x 2.94m Max	9'1" x 9'6"
Bedroom 1:	4.88m x 3.34m Max	16' x 10'9"
Bedroom 2:	4.42m x 2.79m Max	14'5" x 9'1"
Bedroom 3:	3.46m x 1.96m Max	11'3" x 6'4"
Bathroom:	2.23m x 1.7m Max	7'3" x 5'5"

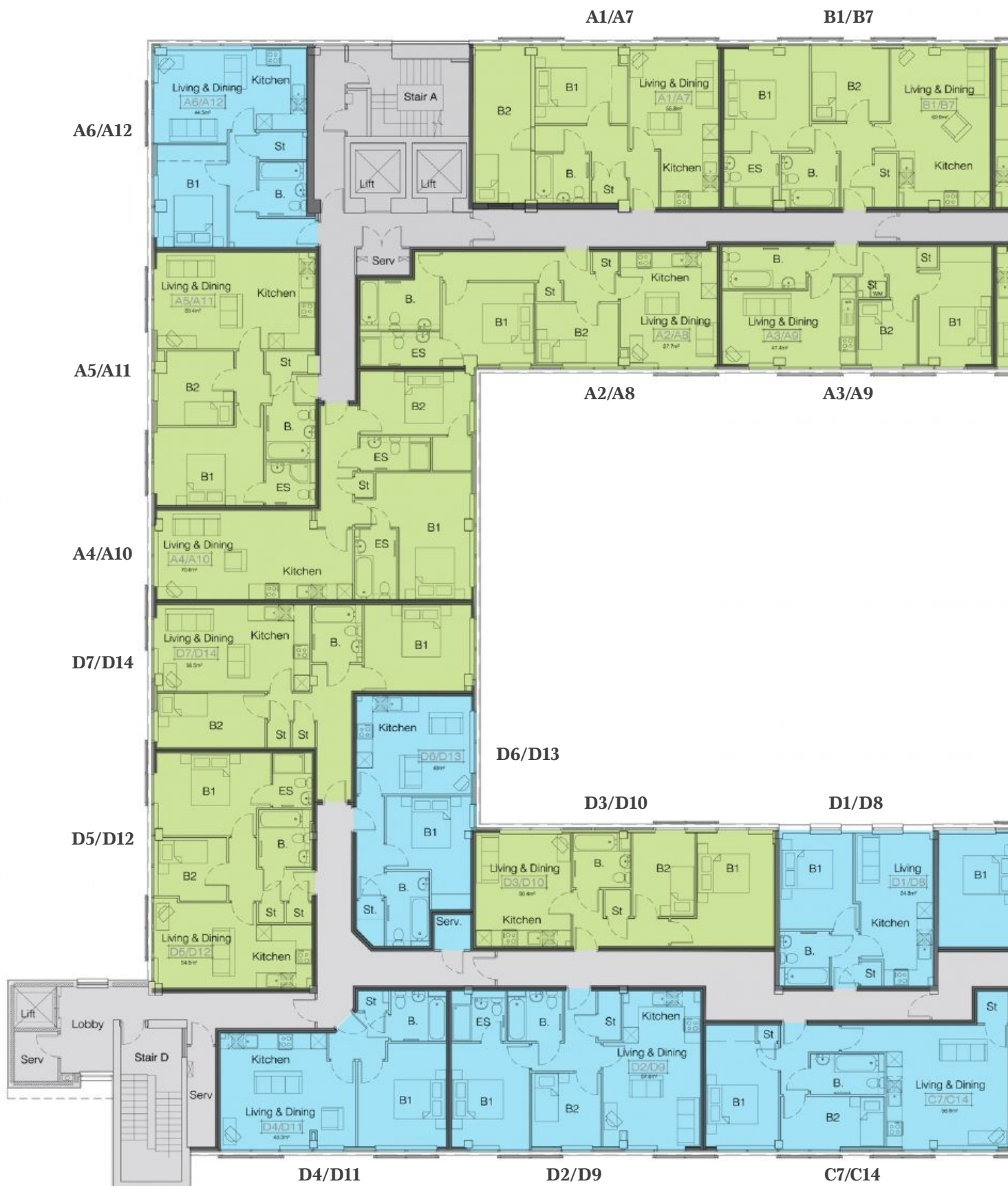
Apartment 25 – 1 Bedroom

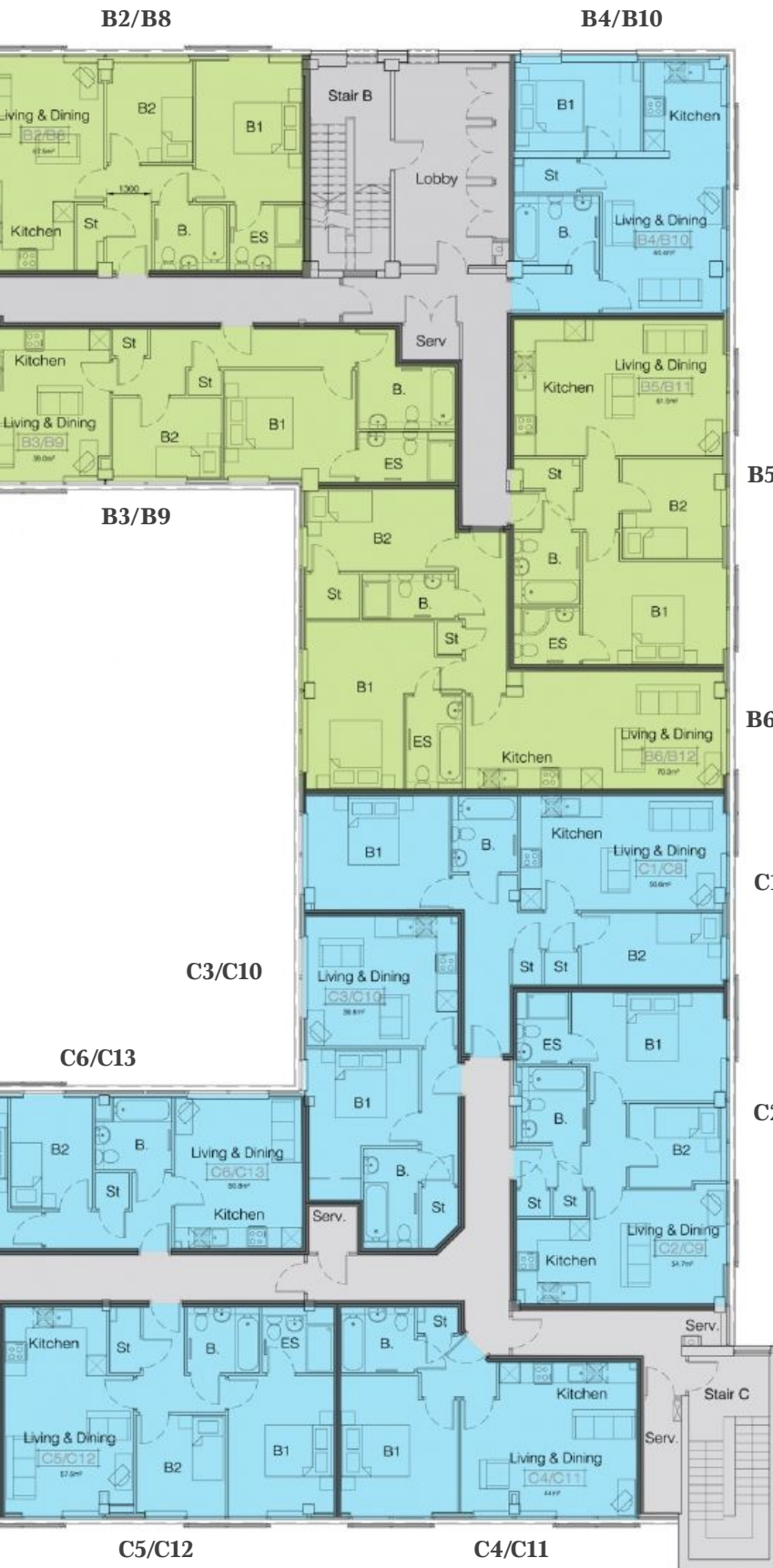
Area:	44.6 sq. M	480 sq. ft
Living space:	3.03m x 5.97m Max	19'5" x 9'9"
Kitchen:	3.33m x 1.9m Max	10'9" x 6'2"
Bedroom 1:	3.82m x 2.91m Max	12'5" x 9'5"
Bathroom:	3m x 1.6m Max	9'8" x 5'2"

Apartment 26 – 1 Bedroom

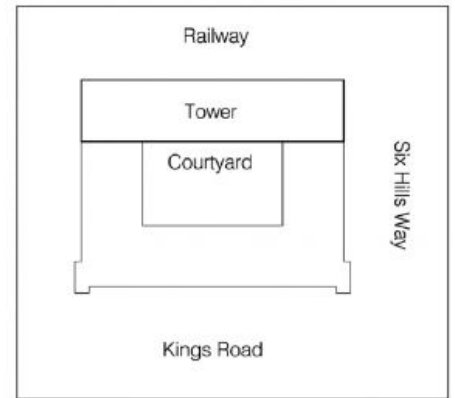
Area:	38.1 sq. M	410 sq. ft
Living space:	3.27m x 3.63m Max	10'7" x 11'9"
Kitchen:	2.73m x 2.28m Max	8'9" x 7'4"
Bedroom 1:	2.9m x 3.9m Max	12'7" x 9'5"
Bathroom:	2.39m x 1.7m Max	7'8" x 5'5"

Floor Plan





- 1 Bed
- 2 Bed
- Common/ Shared Areas



Due to the nature of conversion works, layouts, sizes, and specification may change. Purchasers please check all details on site before completion.

First & Second Floor

Schedule of Accommodation

First & Second Floor

Apartment A1 / A7 – 2 Bedroom

Area:	55.8 sq. M	600 sq. ft
Living space:	3.42m x 3.86m Max	11'2" x 12'6"
Kitchen:	3.2m x 2.23m Max	10'4" x 7'3"
Bedroom 1:	2.88m x 3.58m Max	11'7" x 9'4"
Bedroom 2:	5.84m x 2.17m Max	19'1" x 7'1"
Bathroom:	1.9m x 2.1m Max	6'8" x 6'2"

Apartment A2 / A8 – 2 Bedroom

Area:	57.7 sq. M	621 sq. ft
Living space:	3.72m x 2.69m Max	12'2" x 8'8"
Kitchen:	3.72m x 1.81m Max	12'2" x 5'9"
Bedroom 1:	3.54m x 3.2m Max	11'6" x 10'4"
Bedroom 2:	3.17m x 2.29m Max	10'4" x 7'5"
Bathroom:	3.09m x 2.26m Max	10'7" x 7'4"
Ensuite:	3.1m x 1.3m Max	10'1" x 4'2"

Apartment A3 / A9 – 2 Bedroom

Area:	47.4 sq. M	510 sq. ft
Living space:	3.3m x 2.87m Max	10'8" x 9'4"
Kitchen:	3.51m x 1.86m Max	11'5" x 6'1"
Bedroom 1:	4.57m x 2.8m Max	14'9" x 9'1"
Bedroom 2:	2.55m x 2.23m Max	8'3" x 7'3"
Bathroom:	3.2m x 1.6m Max	10'4" x 5'2"

Apartment A4 / A10 – 2 Bedroom

Area:	70.8 sq. M	762 sq. ft
Living space:	3.46m x 3.43m Max	11'3" x 11'2"
Kitchen:	4m x 2.01m Max	13'1" x 6'5"
Bedroom 1:	4.83m x 2.8m Max	15'8" x 9'1"
Bedroom 2:	4.28m x 2.47m Max	14' x 8'1"
Ensuite 1:	2.7m x 1.69m Max	8'8" x 5'5"
Ensuite 2:	1.65m x 1.28m Max	5'4" x 4'1"

Apartment A5 / A11 – 2 Bedroom

Area:	59.4 sq. M	639 sq. ft
Living space:	3.71m x 3.24m Max	12'1" x 10'6"
Kitchen:	3.71m x 1.8m Max	12'1" x 5'9"
Bedroom 1:	4.13m x 3.28m Max	13'5" x 10'7"
Bedroom 2:	2.92m x 2.87m Max	9'5" x 9'4"
Bathroom:	2.1 m x 1.9m Max	6'8" x 6'2"
Ensuite:	1.9m x 1.66m Max	6'2" x 5'4"

Apartment A6 / A12 – 1 Bedroom

Area:	44.5 sq. M	478 sq. ft
Living space:	3.59m x 3.42m Max	11'7" x 11'2"
Kitchen:	3.08m x 1.91m Max	10'1" x 6'2"
Bedroom 1:	3.96m x 2.7m Max	12'9" x 8'8"
Bathroom:	2.1m x 1.81m Max	6'8" x 5'9"

Due to the nature of conversion works, layouts, sizes, and specification may change. Purchasers please check all details on site before completion.

Apartment B1 / B7 – 2 Bedroom

Area:	62.8 sq. M	675 sq. ft
Living space:	3.8m x 3.58m Max	12'4" x 11'7"
Kitchen:	3.54m x 2.16m Max	11'6" x 7'
Bedroom 1:	4.07m x 3.31m Max	13'3" x 10'8"
Bedroom 2:	2.98m x 2.98m Max	9'7" x 9'7"
Bathroom:	2.09m x 2.06m Max	6'8" x 6'7"
Ensuite:	2.09m x 2.06m Max	6'8" x 6'7"

Apartment B2 / B8 – 2 Bedroom

Area:	57.5 sq. M	618 sq. ft
Living space:	3.67m x 3.57m Max	12' x 11'7"
Kitchen:	3.57m x 2.6m Max	11'7" x 8'5"
Bedroom 1:	4.1m x 3.1m Max	13'4" x 10'1"
Bedroom 2:	2.91m x 2.53m Max	9'5" x 8'3"
Bathroom:	2.1m x 1.9m Max	6'8" x 6'2"
Ensuite:	2.81m x 1.37m Max	9'2" x 4'4"

Apartment B3 / B9 – 2 Bedroom

Area:	59 sq. M	635 sq. ft
Living space:	3.71m x 2.64m Max	12'1" x 8'6"
Kitchen:	3.71m x 1.8m Max	12'1" x 5'9"
Bedroom 1:	3.25m x 3.82m Max	10'6" x 12'5"
Bedroom 2:	3.16m x 2.3m Max	10'3" x 7'5"
Bathroom:	2.81m x 2.2m Max	9'2" x 7'2"
Ensuite:	2.12m x 1.9m Max	6'9" x 6'2"

Apartment B4 / B10 – 1 Bedroom

Area:	44.4 sq. M	477 sq. ft
Living space:	3.48m x 3.48m Max	11'4" x 11'4"
Kitchen:	2.4m x 2.6m Max	7'8" x 8'5"
Bedroom 1:	3.62m x 2.6m Max	11'8" x 8'5"
Bathroom:	2.04m x 2.48m Max	6'6" x 8'1"

Apartment B5 / B11 – 2 Bedroom

Area:	61.5 sq. M	661 sq. ft
Living space:	3.99m x 3.78m Max	13' x 12'4"
Kitchen:	3.99m x 2.3m Max	13' x 7'5"
Bedroom 1:	4.11m x 3m Max	13'4" x 9'8"
Bedroom 2:	2.93m x 2.9m Max	9'6" x 9'5"
Bathroom:	2.12m x 1.92m Max	6'9" x 6'2"
Ensuite:	1.61m x 1.9m Max	6'2" x 5'2"

Apartment B6 / B12 – 2 Bedroom

Area:	70.3 sq. M	756 sq. ft
Living space:	3.81m x 3.43m Max	12'5" x 11'2"
Kitchen:	4m x 1.6m Max	13'1" x 5'2"
Bedroom 1:	4.83m x 4.13m Max	15'8" x 13'5"
Bedroom 2:	4.3m x 2.34m Max	14'1" x 7'6"
Bathroom:	2.7m x 1.28m Max	8'8" x 4'1"
Ensuite:	2.7m x 1.6m Max	8'8" x 5'2"

Schedule of Accommodation

First & Second Floor

Apartment C1 / C8 – 2 Bedroom

Area:	56.6 sq. M	609 sq. ft
Living space:	3.3m x 3.5m Max	10'8" x 11'4"
Kitchen:	3.3m x 2.38m Max	10'8" x 7'8"
Bedroom 1:	4.12m x 3.3m Max	13'5" x 10'8"
Bedroom 2:	4.09m x 2.1m Max	13'4" x 6'8"
Bathroom:	2.2m x 1.92m Max	7'2" x 6'2"

Apartment C2 / C9 – 2 Bedroom

Area:	54.7 sq. M	588 sq. ft
Living space:	3.3m x 3.04m Max	10'8" x 9'9"
Kitchen:	3.3m x 2.15m Max	10'8" x 7'
Bedroom 1:	4.41m x 3.21m Max	14'4" x 10'5"
Bedroom 2:	2.67m x 2.33m Max	8'7" x 7'6"
Bathroom:	2.2m x 1.9m Max	7'2" x 6'2"
Ensuite:	2.05m x 1.5m Max	6'7" x 4'9"

Apartment C3 / C10 – 1 Bedroom

Area:	39.8 sq. M	428 sq. ft
Living space:	3.81m x 2.57m Max	12'5" x 8'4"
Kitchen:	2.81m x 1.8m Max	9'2" x 5'9"
Bedroom 1:	3.19m x 3.17m Max	10'4" x 10'4"
Bathroom:	2.9m x 1.58m Max	9'5" x 5'1"

Apartment C4 / C11 – 1 Bedroom

Area:	44 sq. M	473 sq. ft
Living space:	5.14m x 2.4m Max	16'8" x 7'8"
Kitchen:	4m x 1.95m Max	13'1" x 6'3"
Bedroom 1:	4.16m x 3.41m Max	13'6" x 11'1"
Bathroom:	2.13m x 1.9m Max	6'9" x 6'2"

Apartment C5 / C12 – 2 Bedroom

Area:	57.6 sq. M	620 sq. ft
Living space:	3.69m x 2.92m Max	12'1" x 9'5"
Kitchen:	2.97m x 2m Max	9'7" x 6'5"
Bedroom 1:	3.99m x 3.06m Max	13' x 10'
Bedroom 2:	2.8m x 2.6m Max	9'1" x 8'5"
Bathroom:	2.1m x 1.9m Max	6'8" x 6'2"
Ensuite:	2.07m x 1.9m Max	6'7" x 6'2"

Apartment C6 / C13 – 2 Bedroom

Area:	50.8 sq. M	546 sq. ft
Living space:	3.68m x 2.36m Max	12' x 7'7"
Kitchen:	3.68m x 1.67m Max	12' x 5'4"
Bedroom 1:	4.35m x 2.96m Max	14'2" x 9'7"
Bedroom 2:	2.49m x 3.24m Max	10'6" x 8'1"
Bathroom:	2.11m x 2.24m Max	7'3" x 6'9"

Apartment C7 / C14 – 2 Bedroom

Area:	56.9 sq. M	612 sq. ft
Living space:	4.64m x 2.77m Max	15'2" x 9'
Kitchen:	3.68m x 1.86m Max	12' x 6'1"
Bedroom 1:	4.64m x 2.8m Max	15'2" x 9'1"
Bedroom 2:	3.98m x 1.95m Max	13' x 6'3"
Bathroom:	2.85m x 1.58m Max	9'3" x 5'1"

Due to the nature of conversion works, layouts, sizes, and specification may change. Purchasers please check all details on site before completion.

Apartment D1 / D8 – 1 Bedroom

Area:	34.8 sq. M	374 sq. ft
Living space:	2.97m x 2.66m Max	9'7" x 8'7"
Kitchen:	3.14m x 2.75m Max	10'3" x 9'
Bedroom 1:	3.7m x 2.8m Max	12'1" x 9'1"
Bathroom:	2.1m x 1.88m Max	6'8" x 6'1"

Apartment D2 / D9 – 2 Bedroom

Area:	57.8 sq. M	622 sq. ft
Living space:	3.72m x 3.27m Max	12'2" x 10'7"
Kitchen:	3m x 2 m Max	9'8" x 6'5"
Bedroom 1:	3.99m x 3.91m Max	13' x 12'8"
Bedroom 2:	2.8m x 2.68m Max	9'1" x 8'7"
Bathroom:	2.12m x 1.92m Max	6'9" x 6'2"
Ensuite:	2.1m x 2.2m Max	7'2" x 6'8"

Apartment D3 / D10 – 2 Bedroom

Area:	50.8 sq. M	546 sq. ft
Living space:	3.68m x 2.36m Max	12' x 7'7"
Kitchen:	3.68m x 1.67m Max	12' x 5'4"
Bedroom 1:	4.35m x 2.96m Max	14'2" x 9'7"
Bedroom 2:	2.49m x 3.24m Max	10'6" x 8'1"
Bathroom:	2.11m x 2.24m Max	7'3" x 6'9"

Apartment D4 / D11 – 1 Bedroom

Area:	43.3 sq. M	466 sq. ft
Living space:	5.23m x 2.49m Max	17'1" x 8'1"
Kitchen:	4.07m x 1.85m Max	13'3" x 6'
Bedroom 1:	3.25m x 3.39m Max	10'6" x 11'1"
Bathroom:	2.13m x 1.96m Max	6'9" x 6'4"

Apartment D5 / D12 – 2 Bedroom

Area:	54.5 sq. M	586 sq. ft
Living space:	3.28m x 2.93m Max	10'7" x 9'6"
Kitchen:	2.42m x 2.15 m Max	7'9" x 7'
Bedroom 1:	3.95m x 3.16m Max	12'9" x 10'3"
Bedroom 2:	2.59m x 2.45m Max	8'4" x 8'
Bathroom:	2.2m x 1.96m Max	7'2" x 6'4"
Ensuite:	2.1m x 1.5m Max	6'8" x 4'9"

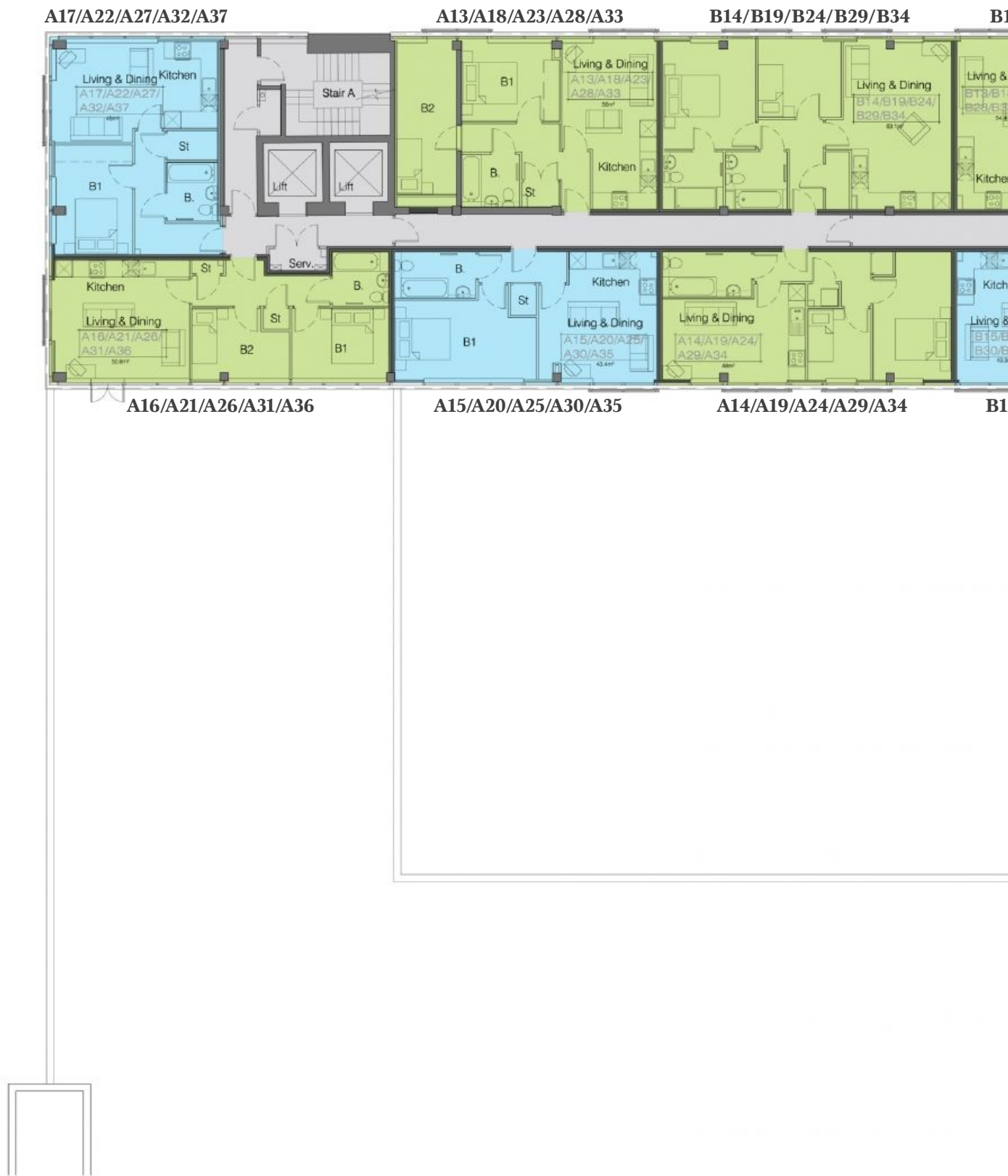
Apartment D6 / D13 – 1 Bedroom

Area:	40 sq. M	430 sq. ft
Living space:	3.78m x 2.53m Max	12'4" x 8'3"
Kitchen:	2.81m x 2.4m Max	9'2" x 7'8"
Bedroom 1:	3.24m x 2.81m Max	10'6" x 9'2"
Bathroom:	2.88m x 1.64m Max	9'4" x 5'3"

Apartment D7 / D14 – 2 Bedroom

Area:	56.5 sq. M	608 sq. ft
Living space:	3.52m x 3.3m Max	12'4" x 8'3"
Kitchen:	3.3m x 2.38m Max	10'8" x 7'8"
Bedroom 1:	4.12m x 3.3m Max	13'5" x 10'8"
Bedroom 2:	4.12m x 2.1m Max	13'5" x 6'8"
Bathroom:	2.2m x 1.94m Max	7'2" x 6'3"

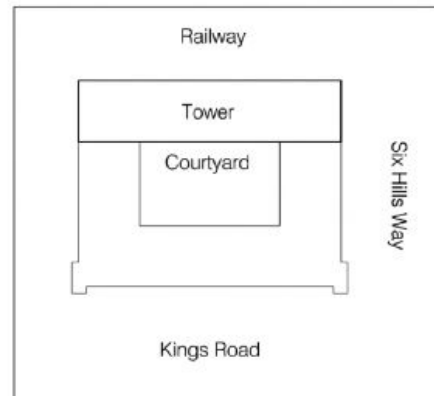
Floor Plan



Due to the nature of conversion works, layouts, sizes, and specification may change. Purchasers please check all details on site before completion.

B3/B18/B23/B28/B33

B17/B22/B27/B32/B37



Third to Seventh Floor

Schedule of Accommodation

Third / Fourth / Fifth / Sixth / Seventh Floor

Apartment A13 / A18 / A23 / A28 / A33 – 2 Bedroom

Area:	56 sq. M	602 sq. ft
Living space:	3.43m x 2.96m Max	11'2" x 9'7"
Kitchen:	3.2m x 2.3m Max	10'4" x 7'5"
Bedroom 1:	3.54m x 2.74m Max	11'6" x 8'9"
Bedroom 2:	5.5m x 2.13m Max	18' x 6'9"
Bathroom:	2.08m x 1.89m Max	6'8" x 6'2"

Apartment A14 / A19 / A24 / A29 / A34 – 2 Bedroom

Area:	48 sq. M	516 sq. ft
Living space:	3.3m x 2.83m Max	10'8" x 9'2"
Kitchen:	3.57m x 1.32m Max	11'7" x 4'3"
Bedroom 1:	4.59m x 2.8m Max	15' x 9'1"
Bedroom 2:	2.56m x 2.25m Max	8'3" x 7'3"
Bathroom:	3.2 m x 1.89m Max	10'4" x 6'2"

Apartment A15 / A20 / A25 / A30 / A35 – 1 Bedroom

Area:	43.4 sq. M	467 sq. ft
Living space:	4.24m x 2.7m Max	13'9" x 8'8"
Kitchen:	3.14m x 1.9m Max	10'3" x 6'2"
Bedroom 1:	5.13m x 2.81m Max	16'8" x 9'2"
Bathroom:	2.94m x 1.65m Max	9'6" x 5'4"

Apartment A16 / A21 / A26 / A31 / A36 – 2 Bedroom

Area:	50.8 sq. M	546 sq. ft
Living space:	4.94m x 2.75m Max	16'2" x 9'
Kitchen:	4.84m x 1.58m Max	15'8" x 5'1"
Bedroom 1:	3.48m x 2.53m Max	11'4" x 8'3"
Bedroom 2:	3.5m x 2.53m Max	11'4" x 8'3"
Bathroom:	2.03m x 1.93m Max	6'6" x 6'3"

Apartment A17 / A22 / A27 / A32 / A37 – 1 Bedroom

Area:	45 sq. M	484 sq. ft
Living space:	3.85m x 3.61m Max	12'6" x 11'8"
Kitchen:	3.17m x 1.92m Max	10'4" x 6'2"
Bedroom 1:	3.88 m x 2.79m Max	12'7" x 9'1"
Bathroom:	2.1m x 1.82m Max	6'8" x 5'9"

Apartment B13 / B18 / B23 / B28 / B33 – 2 Bedroom

Area:	54.4 sq. M	585 sq. ft
Living space:	3.44m x 3.18m Max	11'2" x 10'4"
Kitchen:	2.65m x 2.6m Max	8'6" x 8'5"
Bedroom 1:	3.65m x 3.05m Max	11'9" x 10'1"
Bedroom 2:	2.52m x 2.45m Max	8'2" x 8'
Bathroom:	2.1m x 1.9m Max	6'8" x 6'2"
Ensuite:	2.04m x 1.87m Max	6'6" x 6'1"

Due to the nature of conversion works, layouts, sizes, and specification may change. Purchasers please check all details on site before completion.

Apartment B14 / B19 / B24 / B29 / B34 – 2 Bedroom

Area:	63.1 sq. M	679 sq. ft
Living space:	3.87m x 3.85m Max	12'6" x 12'6"
Kitchen:	3.59m x 2.19m Max	11'7" x 7'1"
Bedroom 1:	3.85m x 3.29m Max	12'6" x 10'7"
Bedroom 2:	2.98m x 2.85m Max	9'7" x 9'3"
Bathroom:	2.21m x 2.09m Max	7'2" x 6'8"
Ensuite:	2.19m x 2.06m Max	7'1" x 6'7"

Apartment B15 / B20 / B25 / B30 / B35 – 1 Bedroom

Area:	43.3 sq. M	466 sq. ft
Living space:	4.27m x 2.73m Max	14' x 8'9"
Kitchen:	3.16m x 1.93m Max	10'3" x 6'3"
Bedroom 1:	5.02m x 2.81m Max	16'4" x 9'2"
Bathroom:	2.93m x 1.68m Max	9'6" x 5'5"

Apartment B16 / B21 / B26 / B31 / B36 – 2 Bedroom

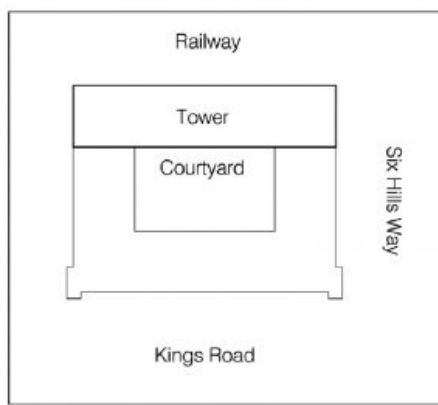
Area:	55.3 sq. M	595 sq. ft
Living space:	3.97m x 2.52m Max	13' x 8'2"
Kitchen:	3.97m x 1.64m Max	13' x 5'3"
Bedroom 1:	4.6m x 2.75m Max	15' x 9'
Bedroom 2:	2.87m x 2.23m Max	9'4" x 9'3"
Bathroom:	2.14m x 1.99m Max	7' x 6'5"

Apartment B17 / B22 / B27 / B32 / B37 – 1 Bedroom

Area:	44.5 sq. M	478 sq. ft
Living space:	3.55m x 3.49m Max	11'6" x 11'4"
Kitchen:	2.65m x 2.48m Max	8'6" x 8'1"
Bedroom 1:	3.76m x 2.58m Max	12'3" x 8'4"
Bathroom:	2.39m x 2.04m Max	7'8" x 6'6"

Floor Plan





Due to the nature of conversion works, layouts, sizes, and specification may change. Purchasers please check all details on site before completion.

Third & Eighth Floor

Schedule of Accommodation

Penthouse

Penthouse 1 – 1 Bedroom

Area:	35.1 sq. M	377 sq. ft
Living space:	3.32m x 2.84m Max	10'8" x 9'3"
Kitchen:	3.12m x 1.9m Max	10'2" x 6'2"
Bedroom 1:	4.66m x 2.32m Max	15'2" x 7'6"
Bathroom:	2.28m x 1.87m Max	7'4" x 6'1"

Penthouse 2 – 2 Bedroom

Area:	53.6 sq. M	576 sq. ft
Living space:	5.78m x 3.68m Max	18'9" x 12'
Kitchen:	2.64m x 2.2m Max	8'6" x 7'2"
Bedroom 1:	3.26m x 3.37m Max	10'6" x 11'
Bedroom 2:	3.54m x 2.45m Max	11'6" x 8'
Bathroom:	2.1m x 1.73m Max	6'8" x 5'6"

Penthouse 3 – 2 Bedroom

Area:	53.6 sq. M	576 sq. ft
Living space:	5.78m x 3.68m Max	18'9" x 12'
Kitchen:	2.64m x 2.2m Max	8'6" x 7'2"
Bedroom 1:	3.26m x 3.37m Max	10'6" x 11'
Bedroom 2:	3.54m x 2.45m Max	11'6" x 8'
Bathroom:	2.1m x 1.73m Max	6'8" x 5'6"

Penthouse 4 – 2 Bedroom

Area:	53.6 sq. M	576 sq. ft
Living space:	5.78m x 3.68m Max	18'9" x 12'
Kitchen:	2.64m x 2.2m Max	8'6" x 7'2"
Bedroom 1:	3.26m x 3.37m Max	10'6" x 11'
Bedroom 2:	3.54m x 2.45m Max	11'6" x 8'
Bathroom:	2.1m x 1.73m Max	6'8" x 5'6"

Penthouse 5 – 2 Bedroom

Area:	53.6 sq. M	576 sq. ft
Living space:	5.78m x 3.68m Max	18'9" x 12'
Kitchen:	2.64m x 2.2m Max	8'6" x 7'2"
Bedroom 1:	3.26m x 3.37m Max	10'6" x 11'
Bedroom 2:	3.54m x 2.45m Max	11'6" x 8'
Bathroom:	2.1m x 1.73m Max	6'8" x 5'6"

Penthouse 6 – 2 Bedroom

Area:	53.6 sq. M	576 sq. ft
Living space:	5.78m x 3.68m Max	18'9" x 12'
Kitchen:	2.64m x 2.2m Max	8'6" x 7'2"
Bedroom 1:	3.26m x 3.37m Max	10'6" x 11'
Bedroom 2:	3.54m x 2.45m Max	11'6" x 8'
Bathroom:	2.1m x 1.73m Max	6'8" x 5'6"

Penthouse 7 – 2 Bedroom

Area:	53.6 sq. M	576 sq. ft
Living space:	5.78m x 3.68m Max	18'9" x 12'
Kitchen:	2.64m x 2.2m Max	8'6" x 7'2"
Bedroom 1:	3.26m x 3.37m Max	10'6" x 11'
Bedroom 2:	3.54m x 2.45m Max	11'6" x 8'
Bathroom:	2.1m x 1.73m Max	6'8" x 5'6"

Penthouse 8 – 2 Bedroom

Area:	53.6 sq. M	576 sq. ft
Living space:	5.78m x 3.68m Max	18'9" x 12'
Kitchen:	2.64m x 2.2m Max	8'6" x 7'2"
Bedroom 1:	3.26m x 3.37m Max	10'6" x 11'
Bedroom 2:	3.54m x 2.45m Max	11'6" x 8'
Bathroom:	2.1m x 1.73m Max	6'8" x 5'6"

Penthouse 9 – 1 Bedroom

Area:	31.7 sq. M	341 sq. ft
Living space:	2.18m x 2.08m Max	7'1" x 6'8"
Kitchen:	3.35m x 1.62m Max	10'9" x 5'3"
Bedroom 1:	3.31m x 3m Max	10'8" x 9'8"
Bathroom:	2.1m x 1.9m Max	6'8" x 6'2"

Penthouse 10 – 1 Bedroom

Area:	46.1 sq. M	496 sq. ft
Living space:	3.23m x 3.03m Max	10'5" x 9'9"
Kitchen:	2.48m x 2.3m Max	8'1" x 7'5"
Bedroom 1:	4.25m x 3.29m Max	13'9" x 10'7"
Bathroom:	2.24m x 1.92m Max	7'3" x 6'2"

Penthouse 11 – 1 Bedroom

Area:	37.8 sq. M	406 sq. ft
Living space:	4.18m x 2.19m Max	13'7" x 7'1"
Kitchen:	3.18m x 2m Max	10'4" x 6'5"
Bedroom 1:	4.24m x 3.04m Max	13'9" x 9'9"
Bathroom:	2.02m x 1.84m Max	6'6" x 6'

Penthouse 12 – 2 Bedroom

Area:	52.2 sq. M	561 sq. ft
Living space:	3.45m x 2.49m Max	11'3" x 8'1"
Kitchen:	3.48m x 2.42m Max	11'4" x 7'9"
Bedroom 1:	3.63m x 3.39m Max	11'9" x 11'1"
Bedroom 2:	3.53m x 2.23m Max	11'5" x 7'3"
Bathroom:	2m x 1.79m Max	6'5" x 5'8"

Penthouse 13 – 2 Bedroom

Area:	52.2 sq. M	561 sq. ft
Living space:	3.45m x 2.49m Max	11'3" x 8'1"
Kitchen:	3.48m x 2.42m Max	11'4" x 7'9"
Bedroom 1:	3.63m x 3.39m Max	11'9" x 11'1"
Bedroom 2:	3.53m x 2.23m Max	11'5" x 7'3"
Bathroom:	2m x 1.79m Max	6'5" x 5'8"

Penthouse 14 – 2 Bedroom

Area:	60.8 sq. M	654 sq. ft
Living space:	3.5m x 2.94m Max	11'4" x 9'6"
Kitchen:	3.5m x 2.4m Max	11'4" x 10'4"
Bedroom 1:	3.49m x 3.2m Max	11'4" x 11'2"
Bedroom 2:	3.5m x 3.44m Max	6'6" x 6'2"
Bathroom:	2.03m x 1.9m Max	6'7" x 6'2"
Ensuite:	2.05m x 1.9m Max	6'7" x 6'2"

Penthouse 15 – 2 Bedroom

Area:	59.4 sq. M	639 sq. ft
Living space:	5.71m x 2.07m Max	18'7" x 6'7"
Kitchen:	4.65m x 1.97m Max	15'2" x 6'4"
Bedroom 1:	3.35m x 3.34m Max	10'9" x 10'9"
Bedroom 2:	3.44m x 3.28m Max	11'2" x 10'7"
Bathroom:	2.2m x 1.9m Max	7'2" x 6'2"

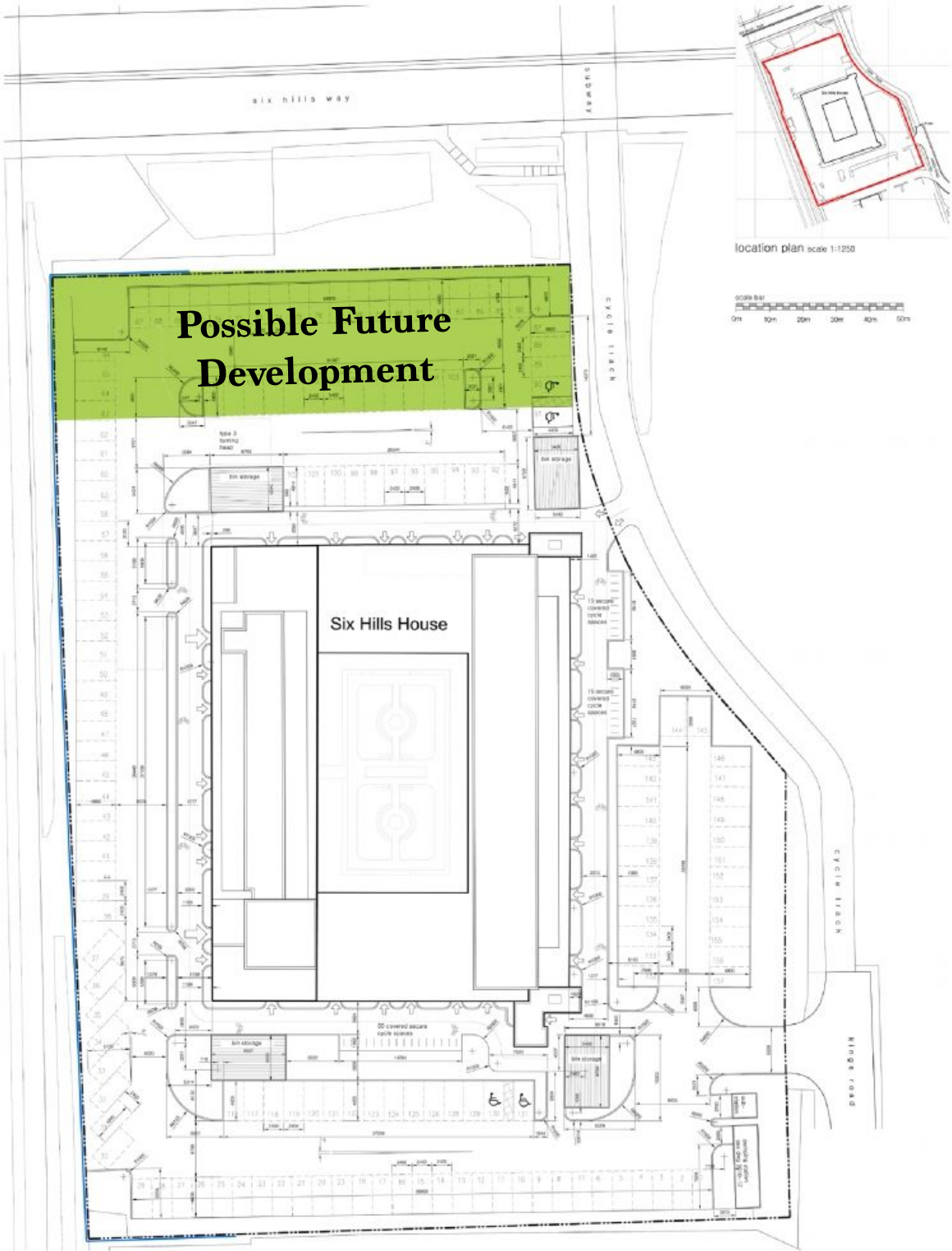
Due to the nature of conversion works, layouts, sizes, and specification may change. Purchasers please check all details on site before completion.

Six Hills



Due to the nature of conversion works, layouts, sizes, and specification may change. Purchasers please check all details on site before completion.

Site Plan



Due to the nature of conversion works, layouts, sizes, and specification may change. Purchasers please check all details on site before completion.



Six Hills House
Kings Road | Stevenage | SG1 2TP



+44 (0) 1245 237 551
www.Landcharter.co.uk